

GOOD NEIGHBOR

HOW TO SHARE HAWAII'S BEACHES WITH ENDANGERED MONK SEALS

RO16 Right Spot Topic ! | RQ72/73 Lehiwa Topic 2 | Other Mom and Pups Topic 3

MY Story

#1: RO16 Right Spot(Mom)02-24



#2: RQ72/73(08-03-2 2) Lehiwa -14th Pup to Right Spot



Right spot and One Day old Lehiwa!



Let's review the above video: Let's find out what the critical points are!

Find out your answer below: (Part 1)

1. Which island was K58 born? Have you been to that island?
2. Who is his mother?
3. Have you heard about K58's mother recently on Oahu? Tell us more! (Answer not in the video)
4. What is the population of Hi Monk Seals in Hawaii?
5. Can you see Hi Monk Seals in any tropical places around the world?
6. What are mammals?
7. Why was RK58 brought to Ke Kai Ola Hospital?



Lehiwa: 10-9-22
Lehiwa(08-03-22)
~Present

Type to enter text



• 08-31-22



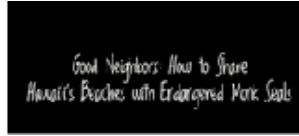
• 09-13-22



• 10-09-22 (weaned)

8. Put the photos of each blue circle below into the correct order about Monk Seal Pupping event! Which is the first and which is the last??

Hi Monk Seal Pupping Stages Listed in incorrect order:	Put numbers from 1~8 to make right order for Pupping:



• 12-25-23



• 1-19-24



• 4-1-24 (2 3/4 yrs Lehiwa checking on New Mom Lei Ola and her pup Kiki)



Find out your answer below: (Part 2)

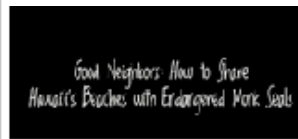
1. What patients during the video were affected by human-wildlife interaction and how did it affect them?

2. What are the key point on the video, "Good Neighbors: How to Share Hawaii's beaches with Endangered Monk Seals?" (Video on the left top)

-
-
-

3. How can you help make SPACE for Hawaiian Monk Seals: list at least 4 "TIPS" you learned.

-
-
-
-
-
-



#3: Other Pairs/Mom and Pup

- Lei Ola and Kiki (BD 3-22-24)
(5-3-34 weaned)



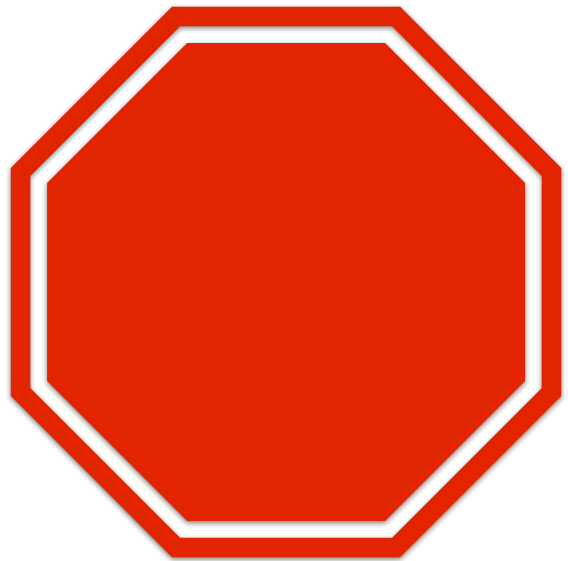
- Rocky and Illi'ili (BD: 6-20-24)
(7-26-24 weaned)



- Kaiwi and Pa'aki (5-1-24 One
hour old)(weaned 6-13-24)



4, Final Project: Suppose you are the leader for "Protect Hawaiian Monk Seals" task force, create a sign, poster, piece of art, or another visual of **how you would describe the distance wildlife viewers should keep from Hawaiian Monk Seals** include one or more of the tips for SAFE Hawaiian Monk Seal viewing below. Take a photo of your fantastic art and send it to kazama982@gmail.com



HOW FAR is 50 ft from the seal or 150 ft from seal's MOM and PUP??? Ke Kai Ola uses a school bus for an example!

